



# KREOPLEX

BOOST YOUR PLANT'S DEFENSE

## Main Characteristics of the strain *Trichoderma Harzianum* T78:

### Distinguishing features;

**Adaptable** to all soils and crop substrates

**Persistent** in variable soil conditions and temperatures

**Compatible** with most chemical fungicides



Optimises microbial interactions in the rhizosphere



Increases stress tolerance (abiotic)



Promotes seed germination, plant growth, flowering and production yields

Trichoderma harzianum T-78 based inoculant. Patented strain licenced to Thinkbio

**KREO**  
KREOTEC KREOSYM KREOPLEX

Kreoplex is a part of the Kreo range of biological products. For further information please see our website.



**think bio**

[www.thinkbio.com.au](http://www.thinkbio.com.au)

# KREOPLEX

BOOST YOUR PLANT'S DEFENSE

## FEATURES

KREOPLEX is a powder granule (WG) formulation, developed using a technology that guarantees the concentration and viability of the product, in addition to an easy application. KREOPLEX contains a patented strain of Trichoderma which solubilizes phosphates in the soil and makes them available to the plant increasing root volume and promote the growth of plants.

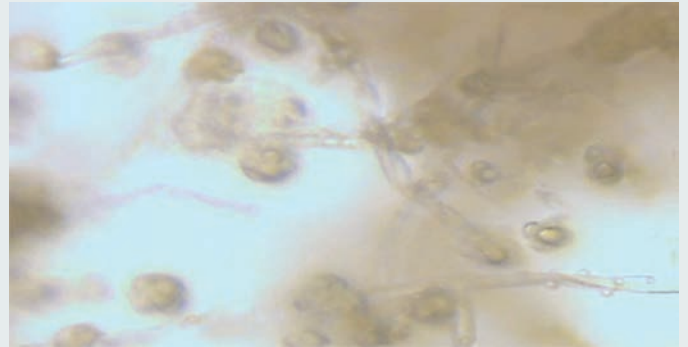
## COMPOSITION

KREOPLEX is a biological product based on a naturally occurring fungi Trichoderma harzianum T78 and contains a minimum of  $1 \times 10^8$  cfu (colony forming units) per gram of product.

## MODE OF ACTION

KREOPLEX works by:

- Trichoderma harzianum T78 helps plants to improve their tolerance to environmental stresses such as salinity and drought by increasing the solubility of nutrients as well as the nutrient uptake capacity of the root and/or their distribution within plant parts.
- The fungal mycelium secretes different compounds that increase the branching capacity of the root system, thus improving nutrient and water acquisition.



## USES AND APPLICATION RATES

KREOPLEX is recommended for any kind of horticultural crops and can be applied by through and irrigation system or by root dipping. The granule must be dissolved in water before being applied to the irrigation system.

## COMPATIBILITY

KREOPLEX is compatible with most of the soil-applied fungicides placed on the market currently. Further information can be found on the Thinkbio website.

## STORAGE AND HANDLING

KREOPLEX should be stored under 25c for a period of 2 years. For longer period, store in a cold dry place at 4 °C.

**Disclaimer:** Any recommendations provided by Thinkbio Pty Ltd or its Distributors are advice only. As no control can be exercised over storage, handling, mixing, application or use, or weather, plant or soil conditions before, during or after application (all of which may affect the performance of our program), no responsibility for, or liability for any failure in performance, losses, damages, or injuries (consequential or otherwise), arising from such storage, mixing, application, or use will be accepted under any circumstances whatsoever. The Buyer assumes all responsibility for the use of any Thinkbio products.